

Report to Community Safety Forum – 7th October 2013**Subject: Crime trends and performance in Brighton & Hove: Position up to August 2013**

Contact Officer: Name: *Ruth Condon* Tel: **29-1103**
E-mail: ruth.condon@brighton-hove.gov.uk

Wards Affected: All

1. SUMMARY AND POLICY CONTEXT:

- 1.1 This report describes recent activities and progress relating to priority areas in the [Brighton & Hove Community Safety, Crime Reduction and Drugs Strategy 2011-14](#). It also provides statistical updates for key crime groups for 2013/14, ie. April to August 2013.
- 1.2 Graphs showing monthly crime data from April 2009 to August 2013 are also provided. These set recent data in the context of both longer term trends and also seasonal crime cycles (where applicable).

2. RECOMMENDATIONS:

- (1) The Community Safety Forum notes the information provided in this report and is invited to:
 - i) Feedback on any developments from their community or organisation's experience which may help the understanding and interpretation of the data and trends contained in this report.
 - ii) Consider the potential for supporting crime reduction and community safety priorities within their own organisation or local community.

3. INFORMATION:**Total police recorded crime**

- 3.1 After seeing a long term decline, the trend in total crimes recorded by the police levelled out in 2012/13. However a downward trend is again in evidence over the first five months of 2013/14 (Apr to Aug) and there is a further 8% decline in total crimes compared with the same months in 2012/13¹. After showing an increase in

¹ During 2012/13 national changes to the reporting of fraud and forgery meant that from Oct 2012 a large proportion of these offences were no longer reportable to the police. Omitting fraud and forgery offences to make a better comparison, total crimes have reduced by 6% over the first 5 months on 2013/14 compared with the same period in 2012/13.

2012/13, theft and handling offences have decreased by 5% so far in 2013/14 and this will have influenced the positive trend in total crimes since they make up about half of total crime.

Neighbourhoods and quality of life

- 3.2 Following a year on year decline in the number of criminal damage offences recorded by the police up to 2012/13, numbers have continued to drop; in the first five months of 2013/14 there were 5.7% fewer crimes than there were in the same months of 2012/13.
- 3.3 In the first four months of 2013/14 there has been an increase in the number of non-accidental fires recorded by the fire service. This overall rise is a consequence of a particular rise in secondary (less serious) fires – primary (more serious) fires are fewer in number and have actually been in decline.
- 3.4 An example of work in neighbourhoods is that which is taking place in two neighbourhood locations in the city centre (Norfolk Square and the High St Car Park) to address anti-social behaviour and other issues related to drug and alcohol misuse and people sleeping rough. The Neighbourhood Liaison Officers in the Community Safety Projects Team have been working with Sussex Police and local residents to carry out street audits to inform the development of local action plans to address problems.

Drugs Misuse

- 3.5 There is a national and local focus on getting drug users into treatment and helping them to recover from dependency and lead a drug-free lifestyle. In 2012/13 419 people left drug treatment of whom 230 people (55%) left treatment in a planned way, an improvement on 50% in 2011/12; 90% did not represent to services within 6 months.
- 3.6 The use of legal highs or 'new psychoactive substances' is an important issue for the city. An evening clinic for users of these drugs is planned to open before Christmas and will be staffed by a multi-disciplinary team. This is intended to attract those who have not already accessed existing services.
- 3.7 A working group is meeting regularly to take forward the 19 recommendations of the Independent Drugs Commission report. The Commission will review progress made in April 2014.

Reducing Offending

- 3.8 Following a rise in the total number of acquisitive crimes (incl. theft/handling, burglary and robbery) over the last two years, the first five months of 2013/14 are showing a decrease of 2.4% compared with the same months in 2012/13. However, in the case of the more serious acquisitive crimes of burglary and vehicle crime, these have continued to increase into 2013/14 compared with the same months of 2012/13. Following historically low numbers of domestic burglaries in 2011/12, there was a steep rise in domestic burglaries during the summer of 2012 and numbers remained high until January 2013, although there has been a general decrease since then. Access has been gained due to doors or windows being insecure in about half of all domestic burglaries. Neighbourhood Policing Teams have carried out a significant amount of crime prevention advice work, there have been visits by the crime prevention officer and a wide range of media opportunities to get the message across have been utilised. This included a week long campaign in September, focusing on the work of the Priority Crime Team, sending out regular messages on Twitter to update the community on offences that are occurring, on prevention work, and on

investigation being undertaken in response to incoming reports. There have also been some significant arrests during this period.

- 3.9 There were fewer vehicle crimes in 2012/13 compared with 2011/12, but in the first five months of 2013/14 numbers have risen compared with the same months in 2012/13. This rise has been seen in both theft of and theft from vehicles, but thefts of vehicles have shown a particular increase. A key contributor to the increase in vehicle crime over this period is the theft of mopeds and off road bikes mainly in East Brighton. The East Brighton Neighbourhood Policing Team have been targeting the area during this period, and are looking at further tactics for identifying the offenders and tackling the issue following the production of an in-depth profile into the problem.
- 3.10 Partnership work aimed at stopping reoffending and tackling the underlying reasons behind offending is ongoing. This has included screening and referring offenders with medical needs into treatment. Although initially this service has been developed and funded as part of a pathfinder, it is hoped that funding will be found to continue this work in the longer term.
- 3.11 Locally and nationally there have been significant changes being made to the way in which offender services are being managed, with offender assessment and the management of the highest risk offenders being retained by the probation service, while the management of other offenders may be opened up to other service providers. There will be close monitoring around the way in which these changes are being implemented and managed.

Alcohol Misuse and Alcohol-related Disorder

- 3.12 Alcohol-related hospital admissions were on an upward trend from the beginning of 2010 until October 2011, but this trend has reversed since then. Numbers recorded in 2012/13 were 9% lower than in 2011/12 and continue to show a further decline in the first three months of 2013/14.
- 3.13 There were 627 police recorded crimes of injury violence in the first five months of 2013/14, 7% below the same months in 2012/13. This is a good start to the year, following a slight increase in these crimes which occurred in the year 2012/13 compared with 2011/12.
- 3.14 A piece of work aimed at addressing the 'drinking culture' in the city is being carried out in liaison with the University Student Union Service to promote a programme of 'Brightonian Days' for Freshers Week offering a series of alcohol-free events, such as cultural tours of the city. Another new initiative which is being piloted in two schools in the city involves the development of 'parental alcohol contracts'. This work will include a 'Talking to your teens' workshop for parents and carers where they will devise the contract between themselves and then publicised to all parents/carers.
- 3.15 One of the other strands of work around alcohol misuse involves early intervention and treatment. There has also been work to ensure that links are in place between Alcoholics Anonymous and other services.

Anti-Social Behaviour

- 3.16 In the first five months of 2013/14 there were 5,800 incidents of anti-social behaviour recorded by the police, 2.4% fewer than in the same months of 2012/13.
- 3.17 The dedicated duty line for reporting anti-social behaviour and hate incidents/crimes has been running since May 2012 (01273 292735 or communitysafety.casework@brighton-hove.gov.uk). In the 11 month period up to March 2013 the duty line received 559 calls. 354 of those related to ASB, 78 to race, 27 to disability, 12 to sexual orientation, 2 to gender identity, 3 to religion and 83

others. In this period 113 new cases were taken on by the Community Safety Casework Team with others being referred to other agencies as appropriate. Between April and August 2013 (5 month period) there were 318 calls to the duty line; 218 of those related to ASB, 33 to race, 5 to disability, 16 to sexual orientation, 5 to religion and 40 others. Over this same period there were 75 new cases for the Casework Team.

- 3.18 The police, Casework Team and a range of other partner agencies have been working together to address the behaviour of a particular group of young people who have been committing ASB and crime. As well as enforcement work, other kinds of support and diversionary activities for those in the group are now in place. The group has now dissipated to a large extent, while a few individuals are being managed by the Youth Offending Service to reduce their offending.

Children, Young People and Families

- 3.19 Police-recorded crimes against young people aged under 18 have reduced in each of the last two financial years and are continuing to do so in the first three months of 2013/14.
- 3.20 The number of young people aged 10-17 entering the criminal justice system continues to decrease (69 in 2012/13 compared with 95 in 2011/12)². In part, this drop is related to introduction of the alternative youth justice disposals (which have replaced Reprimands and Final Warnings) which divert young people from the criminal justice system. Local partnership work between the police and youth crime prevention team has supported this diversionary approach by offering programmes with a strong restorative aspect. A single Youth Early Help pathway was launched in September and provides a more streamlined process for referring young people to youth services (including crime prevention). A joined up process will ensure that all relevant agencies are involved at the earliest stage to reduce risk factors.

Domestic Violence

- 3.21 In the first 5 months of 2013/14 there were 1,398 domestic violence crimes and incidents recorded on the police crime database, which compares to 1,491 in the same months in 2012/13. Due to changes in process as a result of the introduction of a new police crime recording system in May, these data need verifying.
- 3.22 From October 2014 the commissioning of services for victims will become one of the functions of the Police and Crime Commissioner. Brighton & Hove and other Sussex partnerships are working with the PCC's office to undertake an analysis of the needs of victims and witnesses, including those who have suffered domestic violence, in order to help inform resourcing decisions.

Sexual Offences

- 3.23 The number of police recorded sexual offences in the first five months of 2013/14 was 164, and this compares with 120 recorded in the same months of 2012/13. This continues the increase seen during the second half of 2012/13, with serious sexual offences increasing more than less serious offences.
- 3.24 There are plans to commission an independent sexual violence advisor (ISVA) service jointly between Brighton & Hove and East Sussex in future in order that the ongoing provision of this service for residents in both areas can be made more resilient.

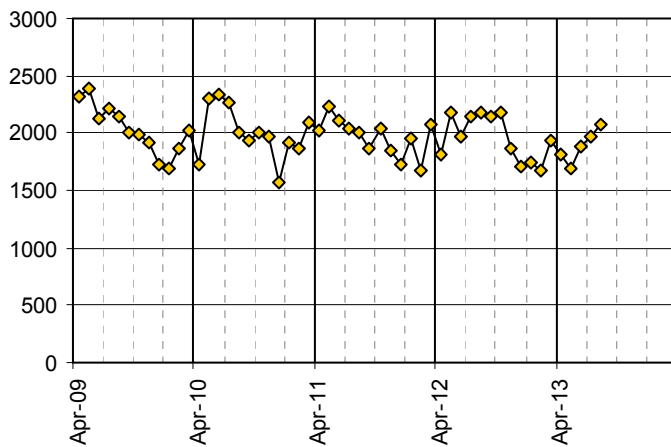
² Numbers in 2013/14 to date await confirmation.

Hate Incidents and Crimes

- 3.25 Sussex Police have been undertaking staff training and other work to improve procedures for recording hate crimes and incidents on their crime/incident recording system. The police recorded 96 racist and religiously motivated incidents and crimes in the first five months of 2013/14 compared with 80 in the same months of 2012/13. The respective figures for LGBT hate incidents and crimes recorded by the police were 46 in the first five months of 2013/14 compared with 26 in the same months of 2012/13. These increases are likely to have been influenced by these improved police recording procedures and administrative changes. In addition, the Sussex-wide seminar held in March on how to widen engagement between partner agencies and communities around the reporting of hate crimes as referred to in the last report contributed to the ongoing drive to improve reporting rates. Sussex Police has developed an action plan to take forward work identified at this seminar.
- 3.26 The Racial Harassment Forum marked its 25th anniversary at People's Day; this helped to increase awareness about reporting of racist and other hate incidents, and raised profile of the RHF, other partners and BME communities. The day provided a platform for positive messages about the diverse communities that share our local space and a sense of belonging to the city, thus undermining racist and extremist narratives. The first Trans Pride event in July was supported by the partnership and provided an opportunity to promote the reporting of trans hate incidents. Reporting by LGBT people via Facebook is an additional way of reaching out to this community. Specific LGBT groups from whom reporting tends to be less common are lesbians, older LGB communities and those who may be marginalised for more than one reason (eg. BME LGBT people).
- 3.27 The police have recorded 12 disability hate crimes and incidents in the first 5 months of 2013/14; this compares with four recorded in the same months of 2012/13 so this represents a positive result in terms of the aim to encourage people to report and to improve recording. However, reports to the Community Safety Casework Team have been low with only 5 reports being made in the first five months of 2013/14.
- 3.28 The Casework Team has created leaflets to publicise their services, and distribution has been specifically targeted to improve reporting from disabled people. Posters aimed at increasing the understanding and reporting of disability hate incidents have been put on the front page of Safe in the City website (www.safeinthecity.info). In addition, outreach work with disabled people and organisations continues and the Casework Team are now running a monthly surgery at the Fed Centre for Independent Living.
- 3.29 The Grace Eyre Foundation are working on an initiative to increase reporting with the learning disabled, creating a video and leaflet to enable identification and reporting of abuse, disability hate incidents and promoting safety within the community. The video (funded by the Learning Disability Development Fund) will also cover the issue of safety on public transport.

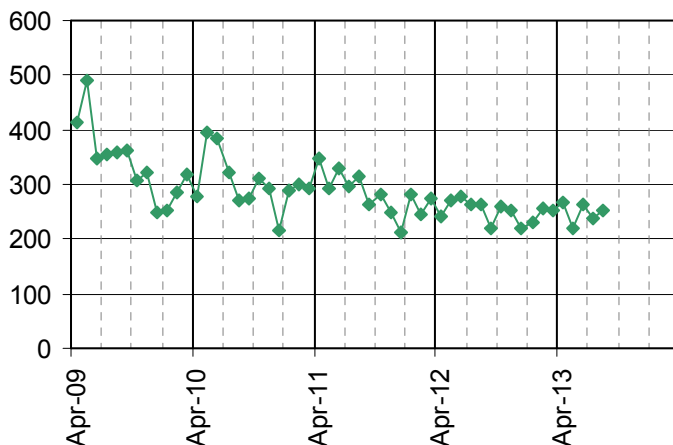
Crime trends up to August 2013 (monthly data)

Total Crimes, Apr 2009 to Aug 2013



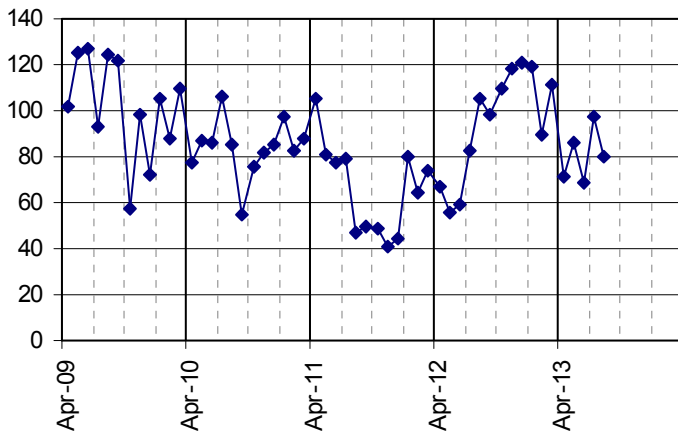
3.31 The number of crimes recorded by the police has continued to demonstrate a seasonal pattern with numbers rising over the summer compared with the winter months. Compared with the summer months last year numbers are lower.

Criminal Damage, Apr 2009 to Aug 2013



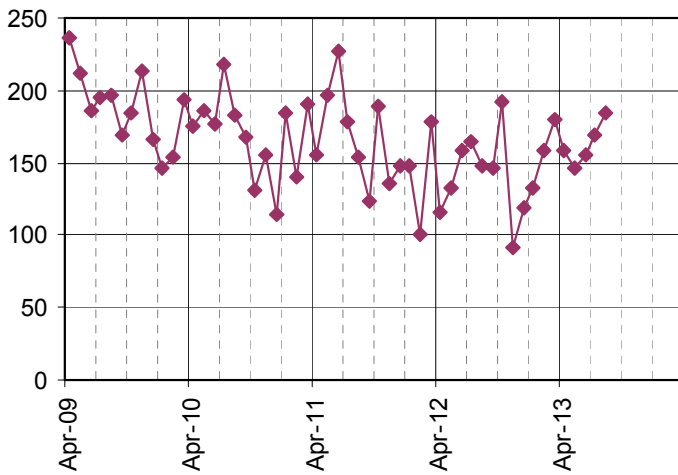
3.32 The long term downward trend in criminal damage continues. In contrast to earlier years when numbers tended to be higher in the early summer, there has not been a particularly noticeable seasonal effect in the numbers of offences over the last 18 months.

Domestic Burglary, Apr 2009 to Aug 2013



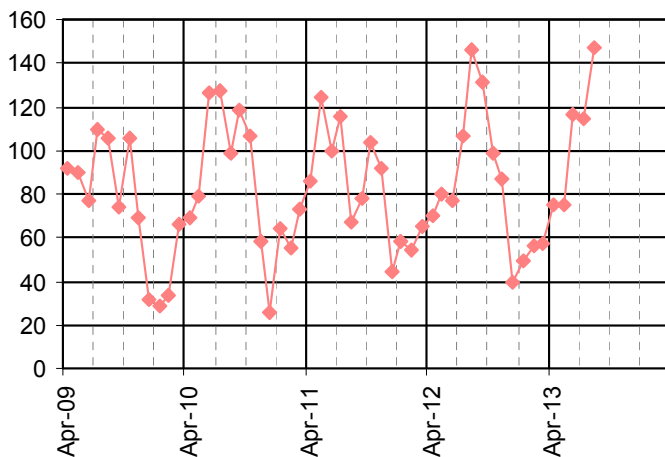
3.35 The average number of domestic burglaries since April 2013 has dropped notably from the monthly average last winter, although is higher than the same months in 2012.

Vehicle Crime, Apr 2009 to Aug 2013



3.36 The number of vehicle crimes has been on a long term decline, but over the last few months there are signs that they may be increasing.

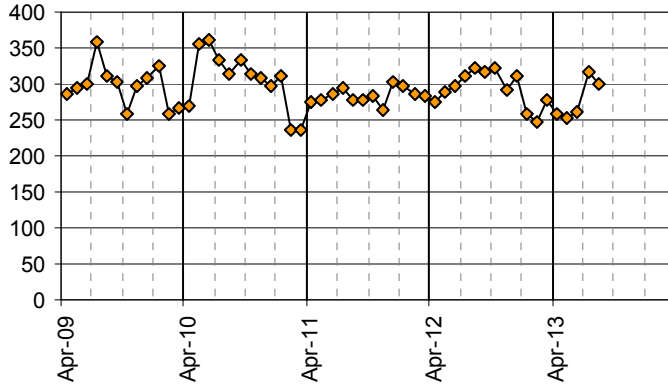
Theft of a Pedal Cycle, Apr 2009 to Aug 2013



3.37 A strong seasonal pattern in cycle thefts continues and is linked to those months when more people tend to cycle. The trend this year is broadly similar to 2012.

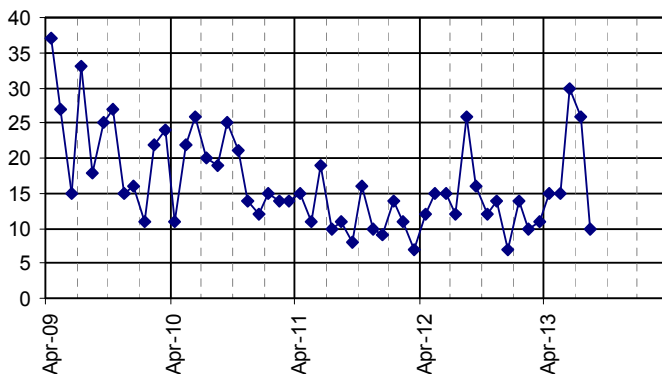
Police crime data presented in this report only reflect those crimes which are reported and recorded. There is likely to be a level of underreporting in many crime types. However, domestic violence and the hate crimes on this page may be particularly liable to underreporting.

Domestic Violence Crimes and Incidents
Apr 2009 - Aug 2013



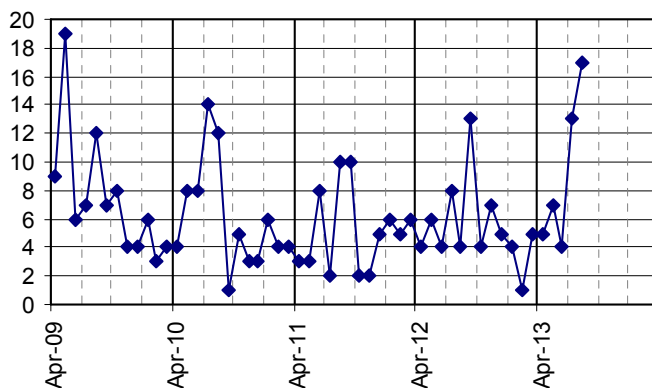
3.38 The number of police recorded domestic violence incidents and crimes each month has been within the range of about 250 and 320 for the last two years.

Racist and Religiously Motivated Crimes and Incidents (police crime database),
Apr 2009 to Aug 2013



3.39 The police have been undertaking work to improve their identification and recording of hate incidents and this is likely to be the reason for the recent increases on numbers recorded.

Homo/bi/transphobic crimes and crime-related Incidents (police crime database),
Apr 2009 to Aug 2013



3.40 The number of police-recorded homophobic, biphobic or transphobic crimes and incidents rose in 2012/13 and has shown a particular increase in July and Aug 2013.

Crime statistics 2013/14: position at end Aug 2013

	number of crimes Apr 12-Aug 13	number of crimes Apr 13-Aug 13	rank within 15 bench-marked CSPs ³
Police recorded crimes			
Total Crimes	10301	9435	10
Criminal Damage	1318	1243	13
Injury Violence	672	627	6
Sexual Offences	120	164	n/a ⁴
Domestic Burglary	370	403	5
Theft from/of a Motor Vehicle	719	816	6
Theft and handling (excl. motor vehicle theft)	11137	11564	9
Pedal Cycle Theft	480	529	7
Police recorded crimes and crime-related incidents			
Domestic Violence Crimes and Incidents ⁵	1491	1389	n/a
Racist/Religiously motivated Crimes and Incidents	80	96	n/a
LGBT Hate Crimes and Incidents	26	46	n/a
Disability Hate Crimes and Incidents	4	12	n/a

³ Brighton & Hove is matched for comparative purposes with 14 other Community Safety Partnerships (CSPs) according to a range of socio-demographic and geographic variables. A rank of 1 is the best; 15 is the worst; 8 is the middle position. Data reflect the ranking for the most recent three month period.

⁴ Because sexual offences, DV and hate crimes are subject to underreporting and local work is being undertaken to increase reporting of these crimes, it is not appropriate to judge performance in comparison with other Community Safety Partnerships based on the number of police recorded crimes.

⁵ This includes incidents where the victim is of any age, not just 16 and over as in the national definition, so will be a slight overestimate.